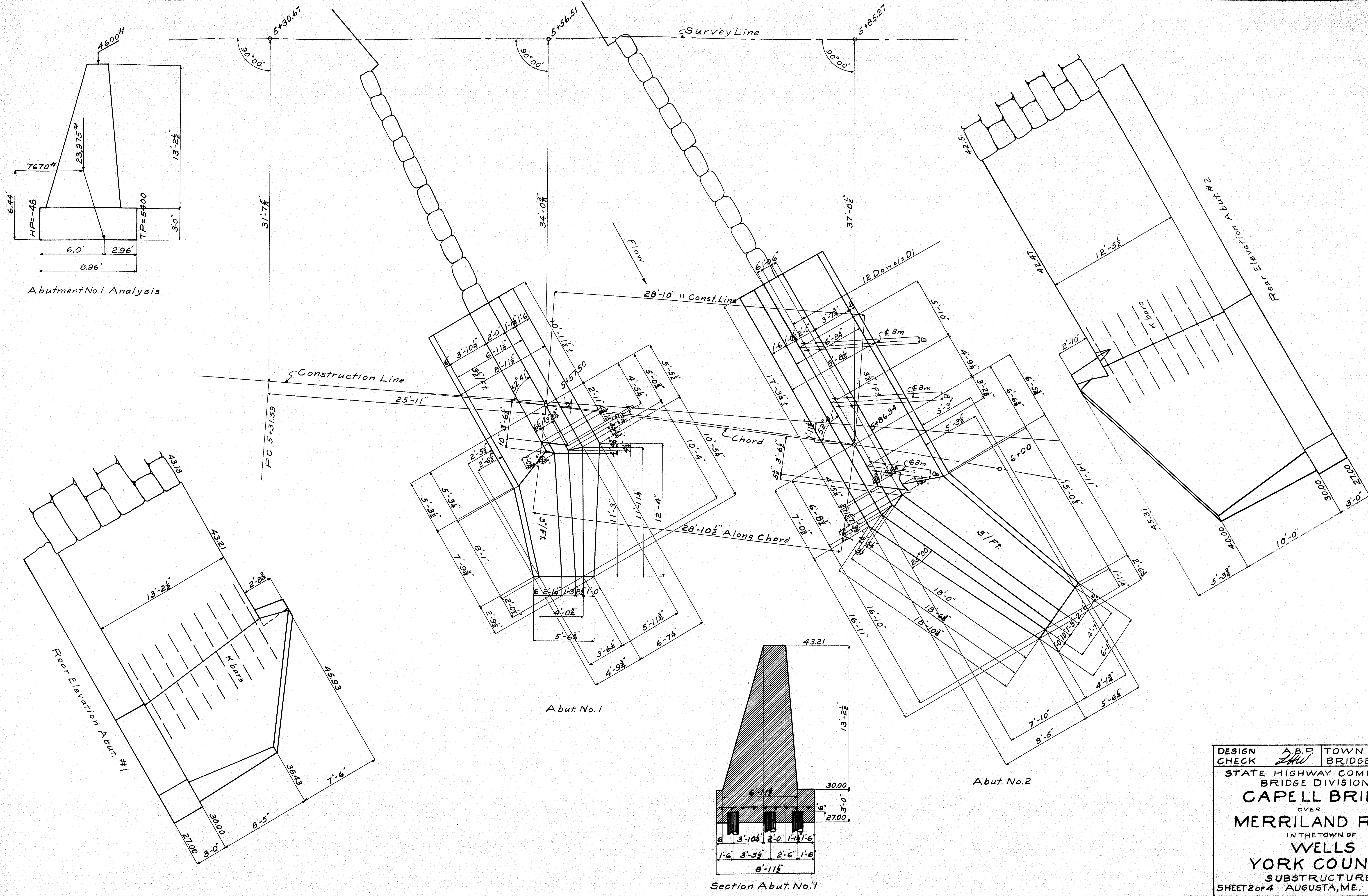


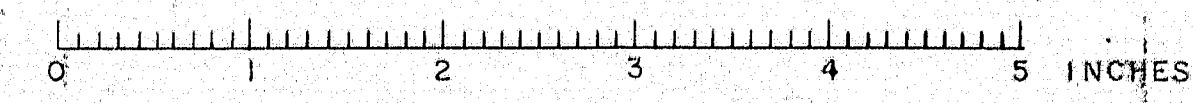
SURVEY BY BLAKE TOWN 16-27
PLOTTER BY FERGUSON BRIDGE 2126
Maine State Highway Commission
Bridge Division
CAPELL BRIDGE
OVER
MERRILAND RIVER
in the town of
WELLS
YORK COUNTY
SURVEY PLAN
Sheet 1 of 4 Augusta, Me. May 21, 1941

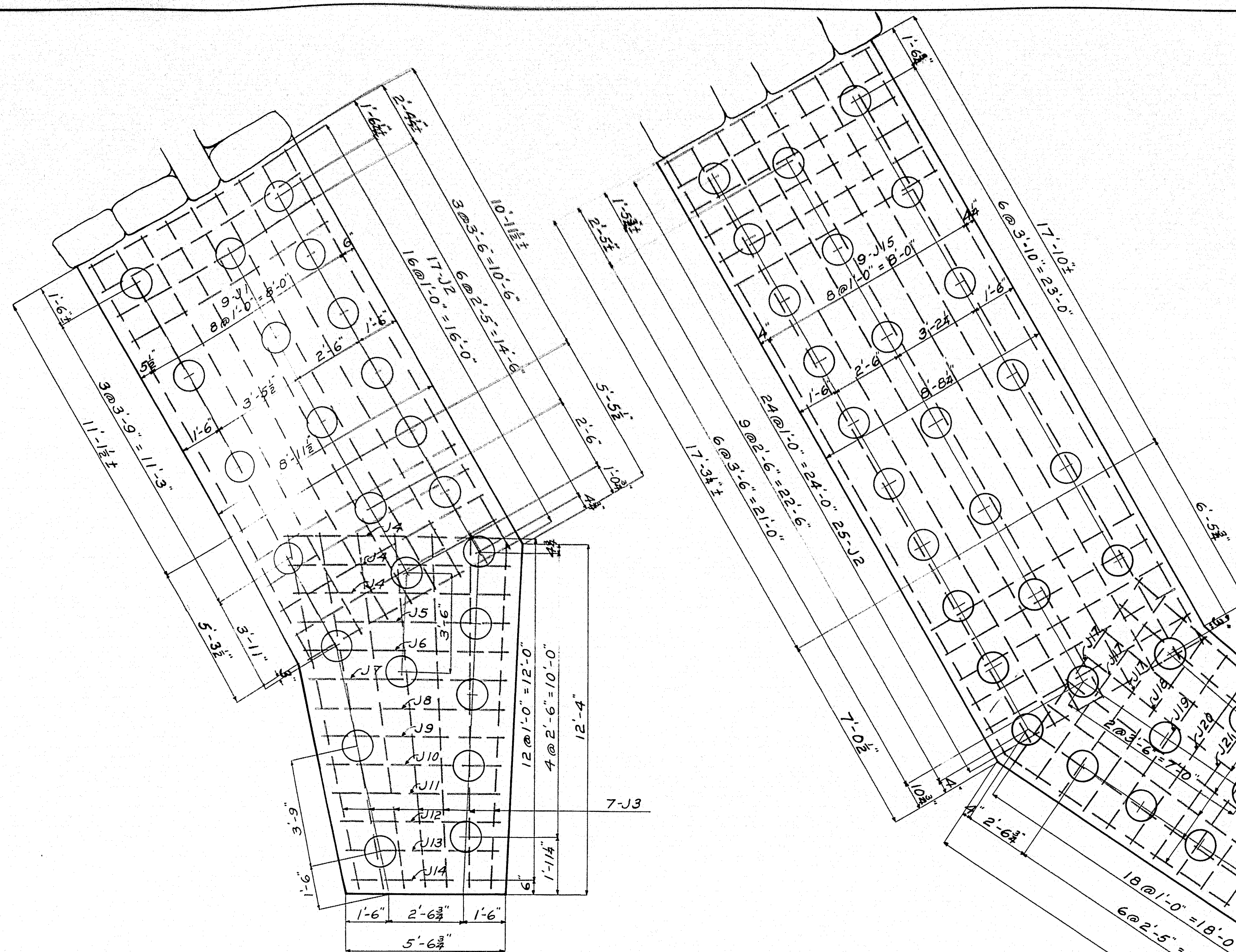
40-72



DESIGN	A.B.P.	TOWN	16-27
CHECK	J.H.W.	BRIDGE	2126
STATE HIGHWAY COMMISSION			
BRIDGE DIVISION			
CAPELL BRIDGE			
OVER			
MERRILAND RIVER			
IN THE TOWN OF			
WELLS			
YORK COUNTY			
SUBSTRUCTURE			
SHEET 2 of 4	AUGUSTA, ME.	AUG 1941	

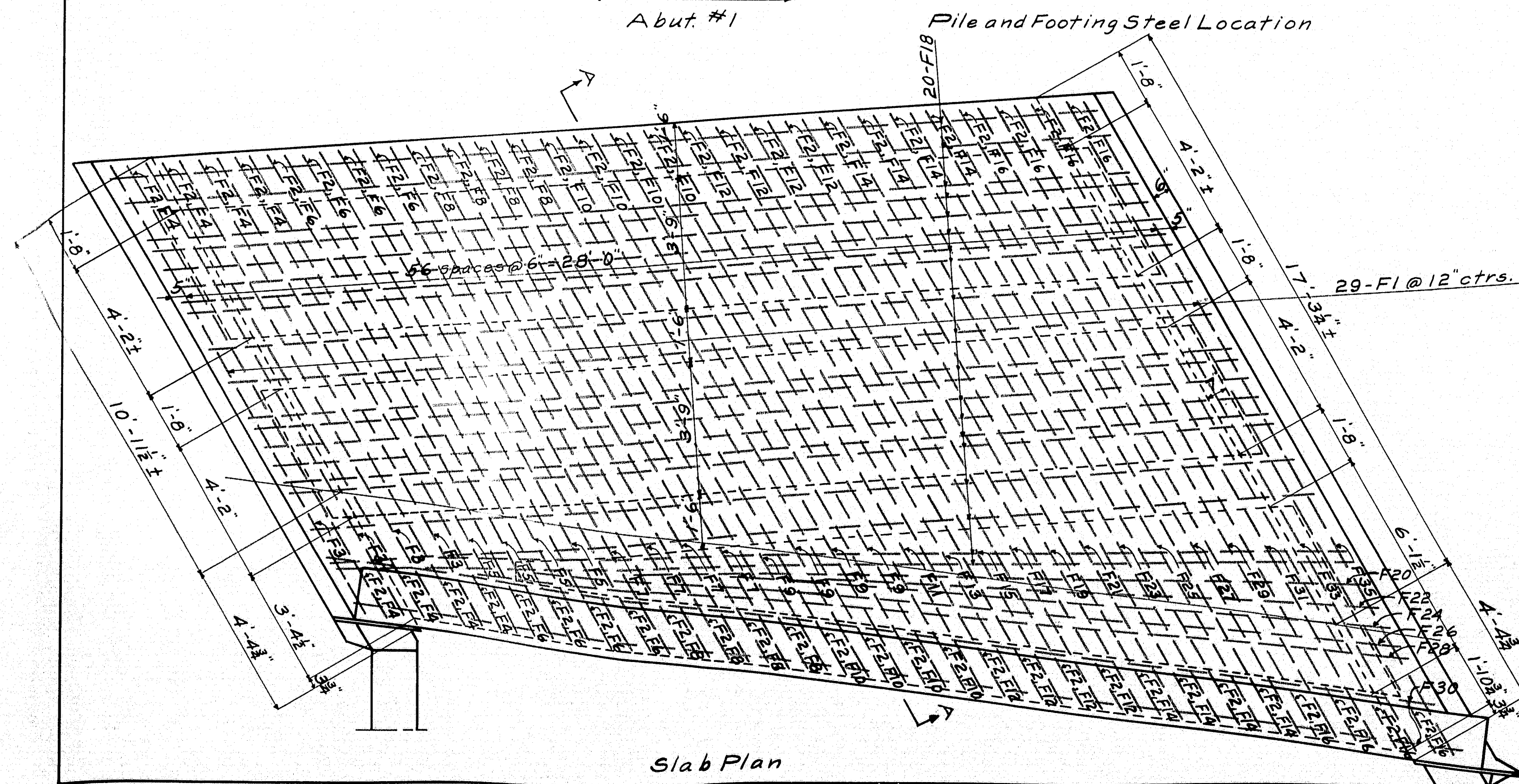
40-73



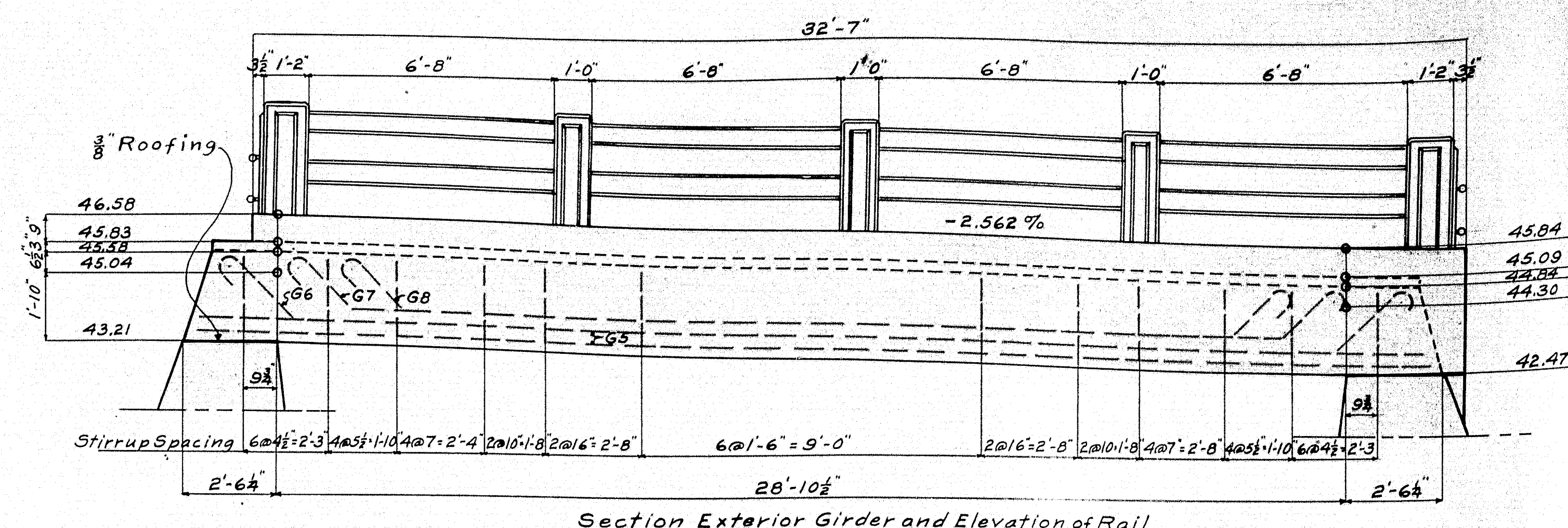


Abut. #1

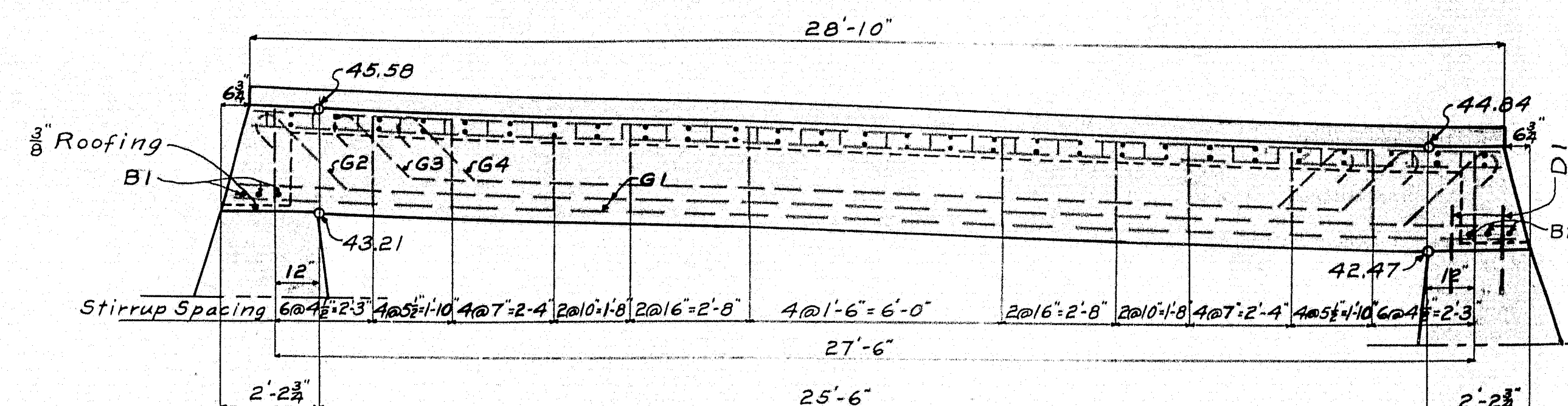
Abut. #2



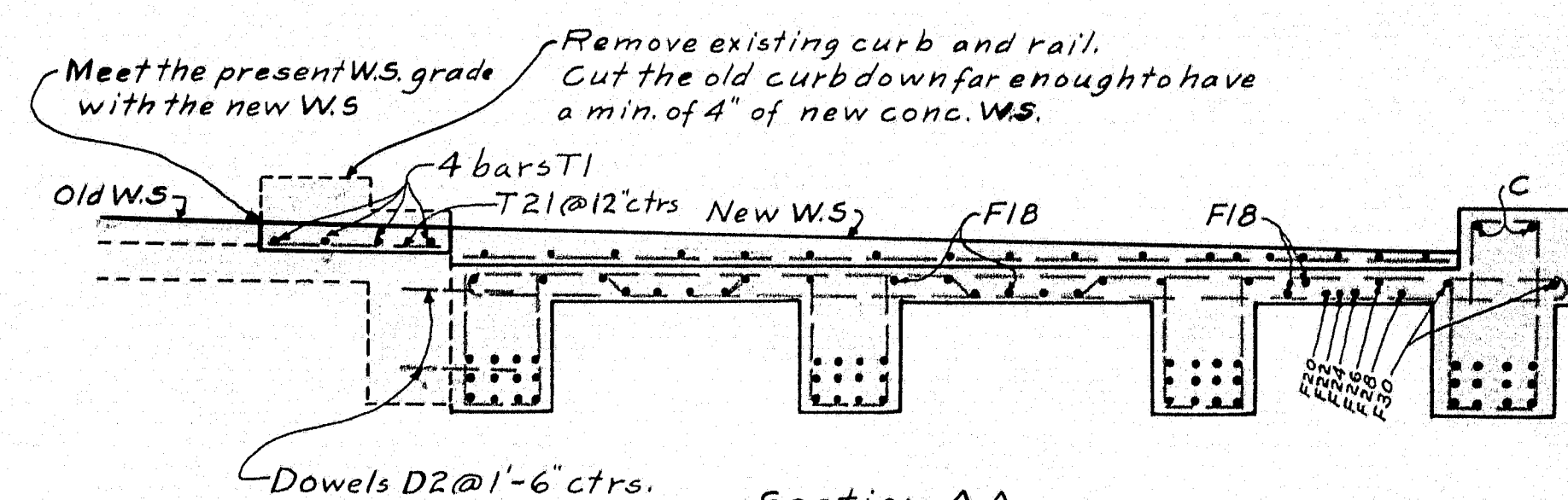
Slab Plan



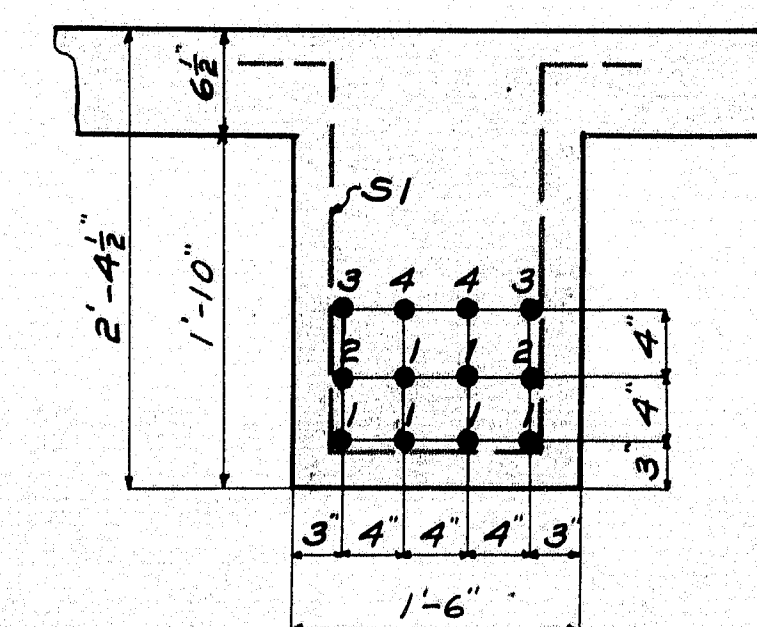
Section Exterior Girder and Elevation of Rail



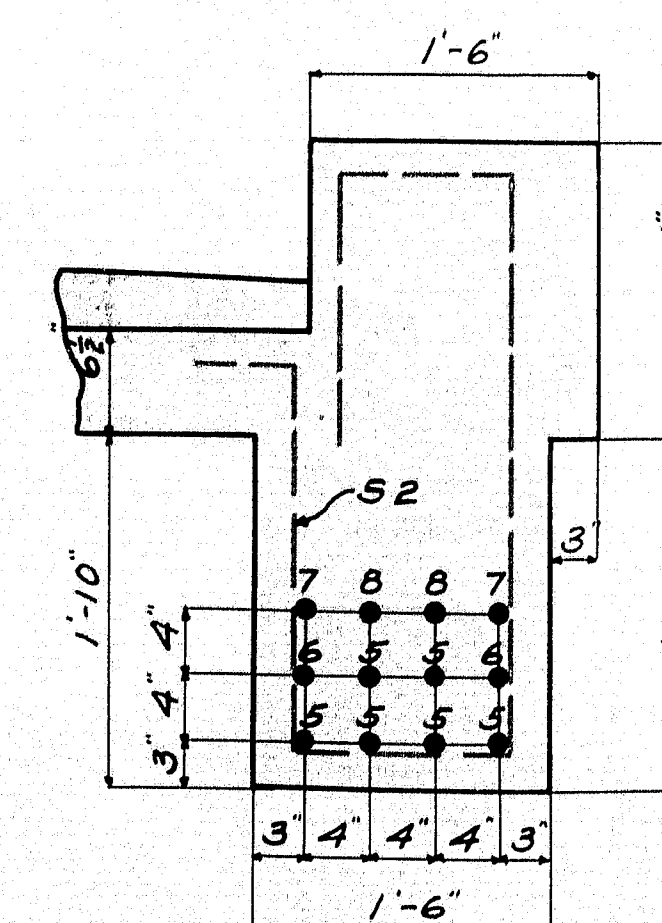
Section Interior Girder



Section AA

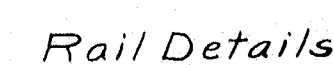


Section Interior Girder

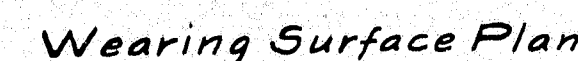


Section Exterior Girder

DESIGN CHECK	APP <i>DM</i>	TOWN BRIDGE	16-27 2126
STATE HIGHWAY COMMISSION BRIDGE DIVISION			
CAPELL BRIDGE			
OVER			
MERRILAND RIVER			
INTHE TOWN OF			
WELLS			
YORK COUNTY			
DETAILS			
SHEET 3 of 4 AUGUSTA, ME. AUG. 1941			



Note
Curb and slab to be cast together.
Steel for Posts to be set in curb.
Precast railbars in lengths of 7'-1".
Place railbars in position with ends projecting
into post forms 2 1/2". Wrap end "c" with two thicknesses
of roofing. Fold inwards and when post forms are
removed cut away all exposed roofing. Panels on posts
to be 3/4" thick. Chamfer all exposed edges of concrete 1/2"
unless otherwise indicated.



Section AA shown on Sheet 3

Mark	No.	Size	Length	Location
S1	123	$\frac{1}{2}'' \phi$	6'-5	Int. Bms.
S2	43	"	9'-5 $\frac{1}{2}''$	Ext. Bm.

DESIGN	APP.	TOWN	16-27
CHECK	<i>SW</i>	BRIDGE	2126

STATE HIGHWAY COMMISSION
BRIDGE DIVISION

CAPELL BRIDGE

OVER

MERRILAND RIVER

IN THE TOWN OF

WELLS

YORK COUNTY

DETAILS

SHEET 4 of 4 AUGUSTA, ME. AUG. 1941.

